

# ANNUAL REPORT 2022

[www.texasfarmcredit.com](http://www.texasfarmcredit.com)



## Board Resolution Regarding Corporate Giving

It is hereby resolved that it is the desire of the Board to promote community and charitable giving through the employees of Texas Farm Credit by encouraging them and challenging the Association to meet the following financial goals through monetary and time donations.

It is the goal of Texas Farm Credit to set aside 2 percent of its annual net income for charitable giving. This shall include providing relief efforts for communities impacted by natural disasters or devastating events, as well as community giving, youth education and scholarships, sponsorships, military/veterans/first responders support, and education/research.

In addition, the Board encourages all employees of Texas Farm Credit to dedicate at least two paid work days per year to volunteer for organizations that are private or public nonprofit community organizations engaged in meeting human, educational, environmental or public safety needs.



Dear Stockholders,

It is my pleasure to present the 2022 Passion Forward Annual Report.

With the support of our Board of Directors, we launched our Passion Forward initiative in 2017. Through this effort we strive to give 2% of our annual net income to local charitable organizations.

**We're proud to announce that in 2022, we surpassed our goal with a final donated percentage of 2.16%. Combined with previous years, this brings our total Passion Forward donated amount to \$3,943,466.90.**

The following key initiatives serve as cornerstones to our Passion Forward program:

- Supporting students with over \$100,000 in scholarships and awards primarily to 4-H and FFA students.
- Recognizing an employee each year that has demonstrated passion and service in their community through volunteerism with our Tommy Dean Shearrer Community Champion award, which grants \$2,500 on the employee's behalf to the charity of their choice.
- Joining with other Farm Credit associations in a \$162,500 contribution supporting wildfire relief efforts in Texas.
- Sponsoring the East Foundation's Land Stewardship Ambassador Program which is a 10-week course designed to cultivate 30 future community leaders and land stewards from urban communities.

For 2023, we will aim to meet our goal again by continuing our Employer Matching Gift program which allows employees to donate their hard-earned money to a charitable organization they feel passionate about. In turn, Texas Farm Credit will match their donation dollar for dollar, up to \$150. We will also continue to offer each fulltime employee 16 paid hours to devote to charitable volunteerism. We trust our employees to select meaningful causes, and we're proud to support them and their personal passions.

The spirit of reinvesting in the communities we serve is deeply embedded in our culture – one of the strengths of the cooperative business model, and we're proud to support the future of agriculture and rural Texas in this way.

I'd like to say thank you to the Texas Farm Credit employees who took time away from their regular workday to volunteer and donate money out of their own pockets, to our directors for supporting this mission, and a special thank you to our customers and shareholders who have chosen us as their financial partner. We look forward to our continued relationship and a prosperous 2023.

Mark Miller  
Chief Executive Officer



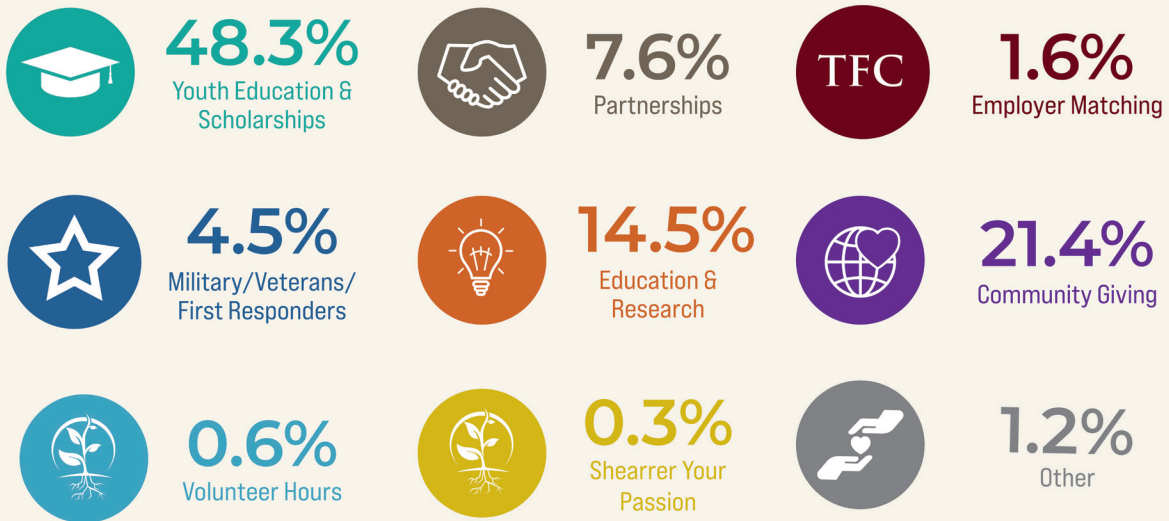
## Who We Are

Texas Farm Credit finances agricultural operations, agribusinesses, homes and rural real estate, and offers a variety of insurance services.

Our mission is to serve the agricultural and rural community by being a reliable lending source in both good times and bad.

Headquartered in Robstown, Texas, we serve 100 Texas counties from the Red River to the Rio Grande Valley and are part of the Farm Credit System, a nationwide network of rural lending cooperatives established in 1916.

## 2022 Passion Forward Results





# Board of Directors

The Texas Farm Credit Board of Directors is made up of 10 members who not only support our goals of giving back but also challenge us to find creative ways to get involved.

- Bobby Hobson, Chairman
- Jerry Chappell, Vice Chairman
- Thomas Barker
- James Dawley
- Marion Durand
- Roxann Garvin
- David Henneke
- John Prukop
- Mark Reus
- Greg Richbourg



## Table of Contents

- Community Giving .....5
- Education and Research & Partnerships.....6
- Employee Giving & Volunteerism .....7
- Youth Education and Scholarships | Military, Veterans,  
First Responders Support.....8
- Relief Efforts .....9
- Sponsorships ..... 10

# Community Giving

- Back to School Supply Drive • Food Pantry • Smith County Child Welfare • SFA Gardens
- Sunny Glen Children's Home

1. The Beaumont branch teamed up with local businesses to create a fun back-to-school bash which included tacos, clothes and free school supplies.
2. The Bonham branch donated items to their local food pantry. Organized by the Ladies Professional Networking Group of Fannin County which Angie Hickman, Shayna Rolen, Hillary Curry, and Meghann Steward are members of.
3. The Tyler branch was honored to provide Christmas to four Smith County foster children. The Smith County Child Welfare Board fulfills every wish list for every foster child in the Smith County system. (Pictured: Kyle Watts and Tiffany Smith)
4. Angela Shannon of the Nacogdoches Branch used employer matching funds to donate to the Stephen F. Austin Gardens.

The SFA Gardens' mission is to create an environment where people can explore the natural world, nurture a sense of wonder, expand their knowledge, and develop curiosity.

5. Spearheaded by the Inclusion Leadership Council, TFC made a \$2,500 donation to Sunny Glen Children's Home. Sunny Glen is a refuge for abused, neglected, and forgotten children. With community support, they are able to provide loving homes and a variety of services to the foster children. (Pictured: Cyndie Haden, Audrey Soliz, Tracy May and Bruce Kroeker)
6. During the annual Admin/Operations retreat, employees participated in a team-building activity – putting together bikes to donate to Christmas Is For Children. Christmas Is For Children is a non-profit, non-denominational organization

dedicated to providing underprivileged children needed support, care and goods during the holiday season.



1



2



3



4



5



6a



6b



# Education and Research & Partnerships

- East Foundation • Texas A&M Agribusiness Entrepreneurship Program
- TSCRA Special Ranger Foundation • Farm Credit Fellows

1. Texas Farm Credit attended the grand opening of the East Foundation's newest educational facility called "Behind the Gates," which is located on one of their ranches in South Texas. TFC is a proud partner and helps support the educational programs carried out by the East Foundation. With this facility, the East Foundation offers programming, knowledge, and leadership skills to students in South Texas, including underserved communities, benefiting the region now and in the future. This organization connects over 300 students from Idea Schools in South Texas with the natural world while participating in first-hand, outdoor learning experiences focused on a variety of topics, including cattle management, native wildlife, natural resource conservation, and endangered species conservation. (Pictured: Carrie Zepeda,

Tracy May, Jolene Curtis, Mark Limon, Billy Best and Kevin Trapp.)

2. TAMU Entrepreneurship Program: TFC continued their five-year commitment to sponsor the annual Texas A&M University (TAMU) agribusiness entrepreneurship program symposium. The symposium is a signature event of the TAMU Department of Agricultural Economics in the College of Agriculture and Life Sciences. Through the entrepreneurship program, agricultural economics students learn business start-up principles and conceptual planning.

3. Several Farm Credit organizations joined forces to make a record donation to the Texas and Southwestern Cattle Raisers Association (TSCRA) Special Ranger Foundation in support of the foundation's efforts to provide law enforcement and

investigative resources to agricultural producers and rural communities. Seven farm credit associations, including Texas Farm Credit combined to donate \$77,000, smashing the foundation's fundraising goal of \$60,000.

4. Farm Credit Fellows: TFC initiated a Farm Credit Fellows program - a partnership between Texas Farm Credit and Texas A&M-Kingsville to enhance the understanding and application of agricultural finance principles such as risk assessment, loan structuring, financial analysis, and borrower-lender relationships to students.



1

## TEXAS FARM CREDIT ENTREPRENEURIAL DREAMS SYMPOSIUM

*Save the Date!*



2



3



4



# Employee Giving & Volunteerism

- Salvation Army • Ronald McDonald House • Mission Trip

1. Heather Hirschfield of the Robstown branch, along with her son Gage, rang the bell for the Salvation Army during the Christmas holiday season.
2. Kyle Watts of the Tyler Branch and Preston Ingram of the Sulphur Springs branch teamed up to provide and serve lunch at the Ronald McDonald House. RMHD relies heavily on the community to serve three meals daily to the guests.
3. Brandon Spears of the Beaumont branch had the opportunity to serve on his 5th international mission trip and his 2nd trip to Belize and volunteer at the Mountain View Campground. Ten years ago, he poured the foundation on this campground and Hurricane Lisa destroyed one of the cabins so this trip they had to safely break down the cabin. The camp housed 400 kids which is way over capacity, but the kids were willing to sleep on the floor or outside.

4. LeAnn Beasley of the Nacogdoches branch volunteers her time with Mission-NAC which includes hundreds of volunteers who are spread out to more than 20 project sites. LeAnn was the 2021 Tommy Dean Shearrer Community Champion of the Year and received \$2,500 to donate to the charity.



1



2



3a



3b



4



## Youth Education and Scholarships

- Scrambling for Scholarships ● Youth Ag Video Contest ● TSCRA Youth Contest ● Marsha Martin Scholarship

1. The Fairfield branch was the title sponsor for the Kindness from Case "Scrambling for Scholarships" event that celebrated a record breaking fundraiser. This year, the scholarship amount was raised to \$1,000 for each recipient. Three counties, eleven schools and eleven seniors will benefit from this event.

2. For the second year, TFC launched a virtual contest encouraging local youth to submit a video spotlighting their agricultural project for a chance to win a portion of a \$20,000 cash prize. This is the second year in a row Bridger Ethridge has won the Junior Division Youth Video Contest and the Nacogdoches 4-H will also receive a monetary donation. (Pictured: Angela Shannon)

3. The Texas & Southwestern Cattle Raisers

Association's youth contest awards and showcases the art, essay, and photography talent of youth ages 5 to 18 during the Cattle Raisers Convention and Expo which Texas Farm Credit helps support.

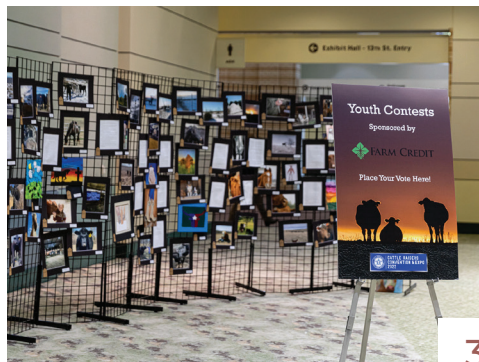
4. Named in honor of Marsha Martin, TFC presents \$5,000 postsecondary scholarships to ten future ag leaders.



1



2



3



4

## Military/Veterans/First Responders Support

- Mission: At Ease ● Operation Care Package

1. Over Veteran's Day weekend, Hayley Birdsong volunteered for Mission: At Ease, which is a non-profit organization dedicated to taking combat veterans on hunting and fishing trips with the goal of providing a positive experience for those that have sacrificed so much for our country. This was the first all women hunt and was a major success.

2a. Operation Care Package: This event held at the annual employee retreats allowed employees to package much needed and wanted items to ship to our military serving overseas.

2b. During the annual Admin/Operations retreat, employees put together care

packages for our active duty military. Third and fourth graders drew pictures to include in the packages. These ladies won the "decorate a box" competition. (Pictured: Amanda Zalkovsky, Hillary Curry, Jenn Correa, Tiffany Smith and Angie Hickman)



1



2b

# Relief Efforts

- Blood Drive • Uvalde First Responders • Tornado Relief • Wildfires

1. The Pleasanton branch hosted the South Texas Blood and Tissue Center blood mobile on August 15th. It was a great turnout from the community.
2. After the devastating attack on Robb Elementary School in Uvalde, TX on May 24th, the Inclusion Leadership Council spearheaded a relief event to provide meals to all First Responders in the area. Law enforcement officers were so grateful to receive a hot meal.
3. Together with the Bonham branch and insurance division, TFC donated \$10,000 to Small Town Helping Hands to help local families that were impacted by the November 4th tornado in Lamar and Red River counties.
4. In response to a destructive wildfire outbreak that impacted much of the Lone Star State in March 2022, several Farm Credit organizations, including Texas Farm Credit, joined forces to contribute to the extensive recovery and relief efforts. Organized by AgTexas Farm Credit, funds were donated by Capital Farm Credit, Central Texas Farm Credit, CoBank, Farm Credit Bank of Texas, Heritage Land Bank, Lone Star Ag Credit, Plains Land Bank, and Texas Farm Credit to raise a total of \$162,500. These funds will be pledged to rural fire departments across the state, and the Texas and Southwestern Cattle Raisers Association (TSCRA) Disaster Relief Fund.



1



2a



2b



3



4



# Sponsorships

- Hopkins County Dairy Festival • Lemonade Day • Special Show • Webb County Ag (WeCAN)

1. The Sulphur Springs branch was a 'cream-of-the-crop' sponsor at the Hopkins County Dairy Festival. This annual salute to the dairy industry wouldn't be possible without the generous support of local businesses. (Pictured: Payton Swinson and Kody Cox)

2. Hosted by the Chamber of Commerce, the Fairfield branch sponsored a Lemonade Day which helps local youth become the business leaders, social advocates, community leaders, and forward-thinking citizens of tomorrow...one lemonade

stand at a time. (Pictured: JP Clopton and Danny Wren)

3. For the 6th year in a row, the Raymondville branch was honored to once again sponsor the Special Show at the Willacy County Livestock Show. As always, it was a stellar event with a great turn out. The Special Show was organized to give the special kids an opportunity to participate in the show ring experience and build confidence and pride. (Pictured 3b: Tracy May, Nicky Brashear, Billy Best, and Elsa Farias)

4. Audrey Vasquez Soliz of the Weslaco and Laredo branches is the board's vice president of Webb County Agriculture Nonprofit (WeCAN). The organization held a prospect show with over 200 exhibitors from Laredo and the surrounding areas exhibiting their heifer, steer, sheep and goat projects. TFC has been one of their greatest supporters since their inception in 2020, and this year, the organization gave out over \$10,000 in cash scholarships and prizes to their exhibitors.



1



2



3a



3b



4



545 South Hwy. 77  
Robstown, Texas 78380  
361.387.8563  
**TexasFarmCredit.com**

